



ANTHRON d.o.o.
 Trgovska ulica 3
 6310 Izola - Isola
 Slovenija
 T: + 386 5 640 01 50
 F: + 386 5 640 01 51
 E: info@anthon.si
www.anthon.si

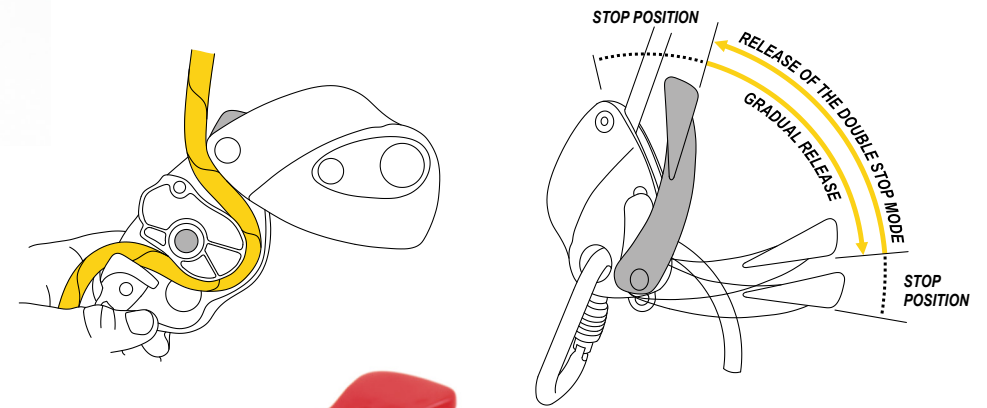
LORY



LORYsmart



LORYsafe



GENERAL INFORMATION

Lory is a robust multipurpose device for use in industrial access and sport climbing applications. Its functionality spans the range from rope access and rescue descender device through semi-automatic belay device to rope positioning, retention device for use on rooftops and edges, temporary anchor device and as fall arrest on flexible guideline.

Two sub-types of the device exist:

LORYsafe with unimpeded movement of the cam (for industrial use) and LORYsmart with impeded movement of the cam (also for sport use). Cam rotation impediment aids in feeding rope to the lead climber.

By pulling the working end of the rope the cam engages and jams the rope. By pulling the handle the cam gradually releases the rope. If the handle is pulled down to its terminal position the double-stop function is triggered which blocks the rope again. To resume descending, return the handle in closed position and restart the process.

NORM ROPE	TYPE ROPE	DIAMETER
EN 12841-C	Static rope	10 - 12 mm
EN 341-A	Bornack tec-static pro Singing rock Static R44	11 mm
EN 358	Singing rock Static R44	10.5 and 11 mm
EN 15151 (LORYsmart ONLY)	Dynamic rope Low stretch rope	8.9 - 11.4 mm 9 - 12 mm
EN 353-2 EN 795	Bornack tec-static and Bornack BFD 01 Energy absorber Singing rock Static R44	11 mm 10.5 and 11 mm

FEATURE	VALUE
MAX. & MIN. RATED LOAD (EN 341)	30 kg to 180 kg
MAX. RATED LOAD (EN 12841)	225 kg
MAX. DESCENT HEIGHT (EN 341)	190 m
TEMPERATURE RANGE	-20 °C to 60 °C
MASS	365 g